



American Made Safes

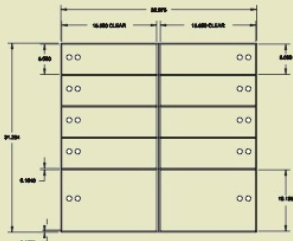
Custom built to your specifications
for superior security

Built to Your Specifications

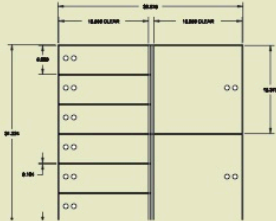
Choose virtually any combination of interiors, sizes, and color



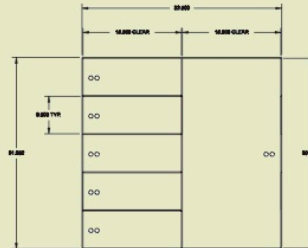
POPULAR INTERIOR OPTIONS



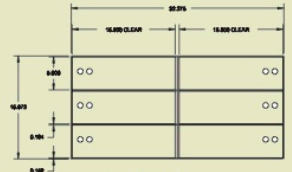
Model 8T-2S



Model 6T-2S



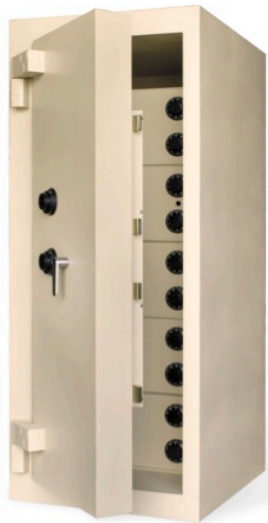
Model 5T-15-6



Model 6T

TRTL-30

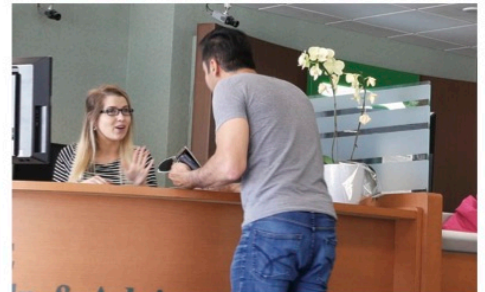
 TWO-HOUR FIRE RATING



These high-security safes are rated to substantially resist mechanical and high-temperature attacks.



- TWO-HOUR FIRE RATING
- UL LISTED FOR 30-MINUTE ATTACK WITH TOOL AND TORCH
- LATEST IN COMPOSITE TECHNOLOGY
- MECHANICAL RELOCKERS
- 5" DOOR
- 31/2" COMPOSITE BODY
- CUSTOM BUILT FOR YOUR NEEDS



STEEL SAFES



Versatile Hamilton steel safes allow you to configure security storage to fit virtually any need.



SECURITY RATINGS: TL-15 AND TL-30
BODY: 1" OR EQUIVALENT STEEL PLATE

DOOR: TL-15 = 1" TL-30 = 2"

BOLTWORK:

- SOLID STEEL BOLTS
- MECHANICAL RELOCKER INCLUDED TO PROVIDE A SECONDARY DEFENSE

TYPES:

TELLER | TELLER RECEIVERS | DEPOSITORIES
 SQUARE SAFE | PORTABLE VAULTS

COMPOSITE SAFES



TWO-HOUR FIRE RATING



An alternate to plate steel, composite safes have a body & door that consist of thin steel forms filled with high-performance, high-tech aggregate.



SECURITY RATINGS:

- TL-15, TL-30, TL-30X6
- 2-HOUR FIRE RATING

BODY:

- 2" COMPOSITE FOR TL-15 AND TL-30
- 4" COMPOSITE FOR TL-30X6

DOOR: TL-15 = 2" | TL-30 = 4"

BOLTWORK:

- SOLID STEEL BOLTS
- MECHANICAL RELOCKER INCLUDED TO PROVIDE A SECONDARY DEFENSE

TYPES:

TELLER SAFE | TELLER RECEIVERS
 DEPOSITORIES | SQUARE SAFE
 PORTABLE VAULTS

TRTL-30x6



TWO-HOUR FIRE RATING



"The ultimate in high security," Hamilton manufactures safes that are UL rated to withstand 30-minute attacks using both torch (TR) and tools (TL).



- UL LISTED 30-MINUTE TORCH AND TOOL ATTACK ON ALL SIX SIDES OF THE SAFE.
- THE LATEST COMPOSITE TECHNOLOGY
- MASSIVE 4-WAY BOLTWORK
- GLASS RELOCKERS
- PERFECT FOR JEWELERS, BANKS, CREDIT UNIONS AND PHARMACEUTICAL STORAGE